

Hello everyone who drives Toyota HiLux.

We know how you have it. That's why we make interiors for you.



HiLux Vigo X-Tra Cab

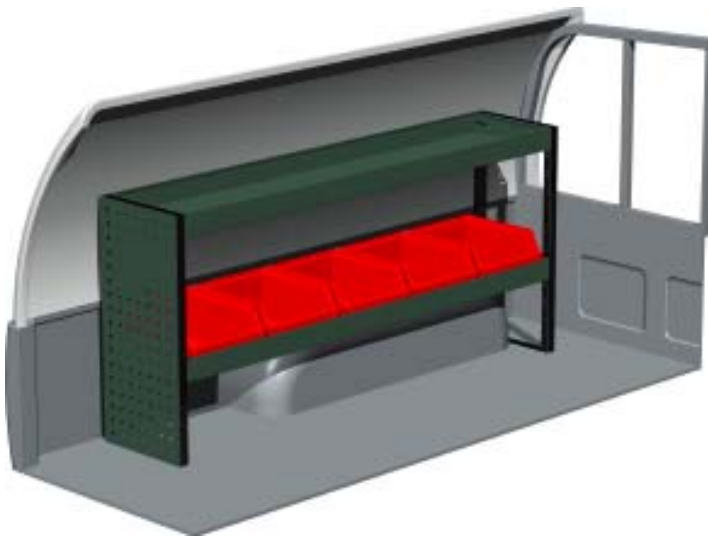


A place for everything.

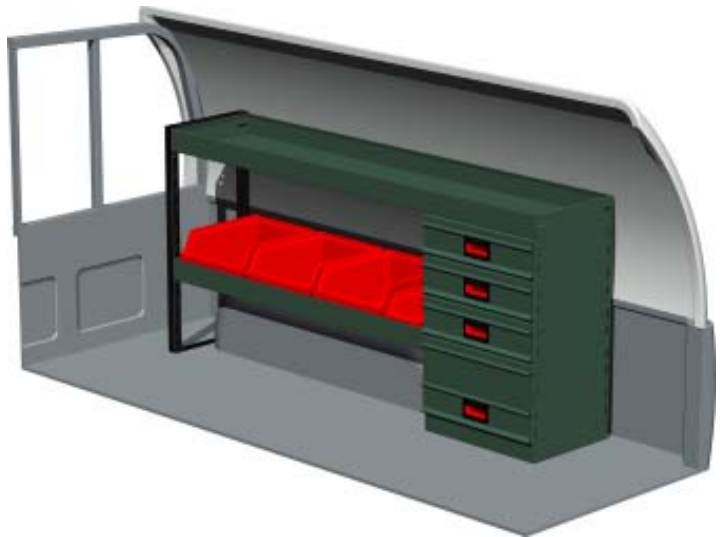
How much time do you spend on finding the right tool or spare part?

How many minutes a day? How many kilometers a day?

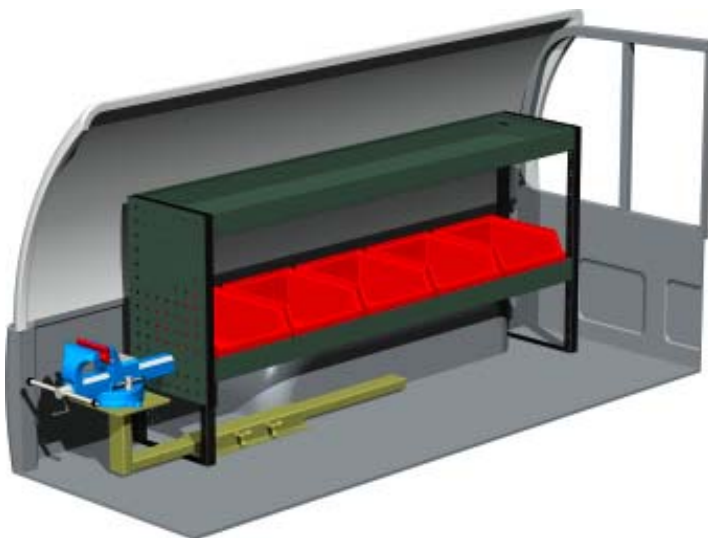
With the right interior and a good order in your van you can spend your time on work.



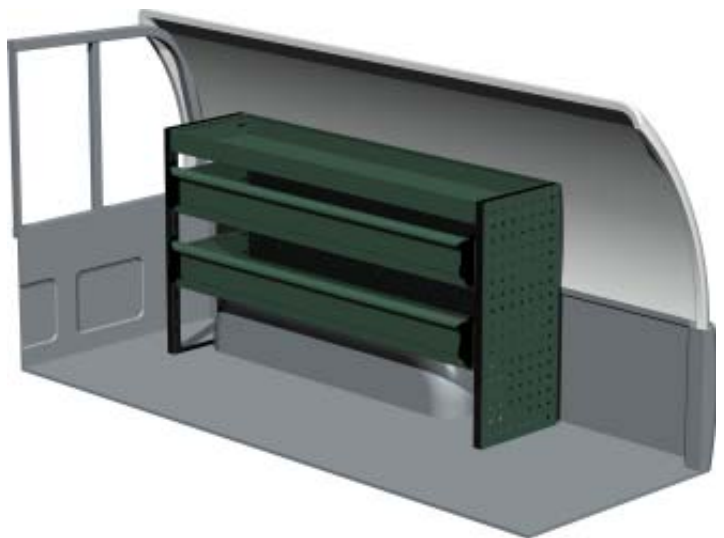
Package No. F60011
W x D x H 1450 x 300 x 670 mm
Weight app. 18 kg



Package No. F60012
W x D x H 1419 x 300 x 670 mm
Weight app. 28 kg



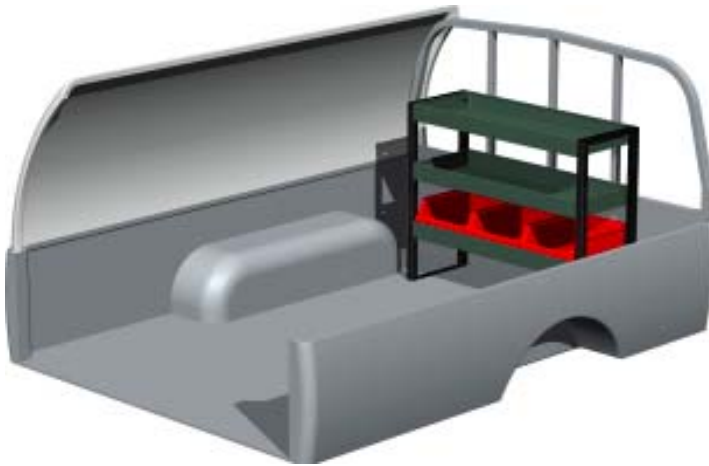
Package No. F60013
W x D x H 1450 x 300 x 670 mm
Weight app. 36 kg



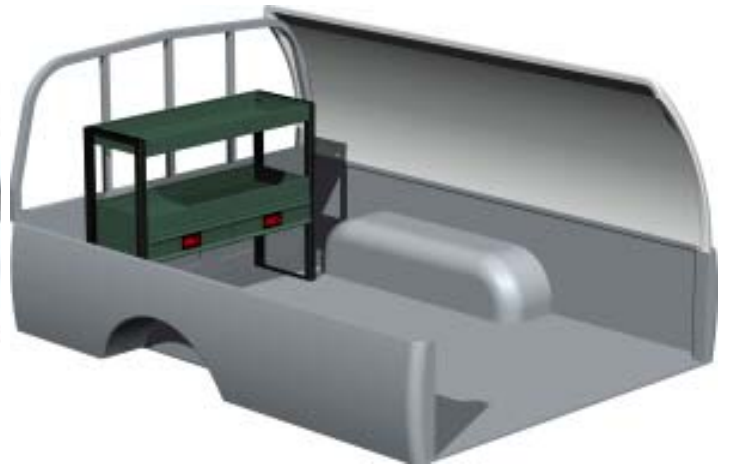
Package No. F60014
W x D x H 1237 x 300 x 670 mm
Weight app. 24 kg

Toyota HiLux Vigo X-Tra Cab

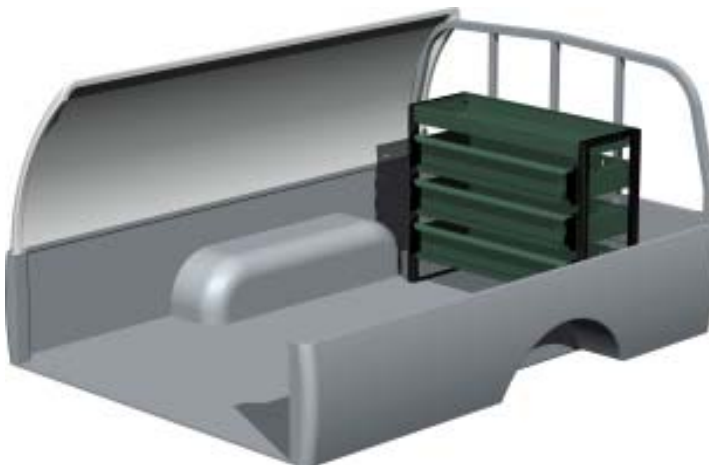
Document: THVXC-0401



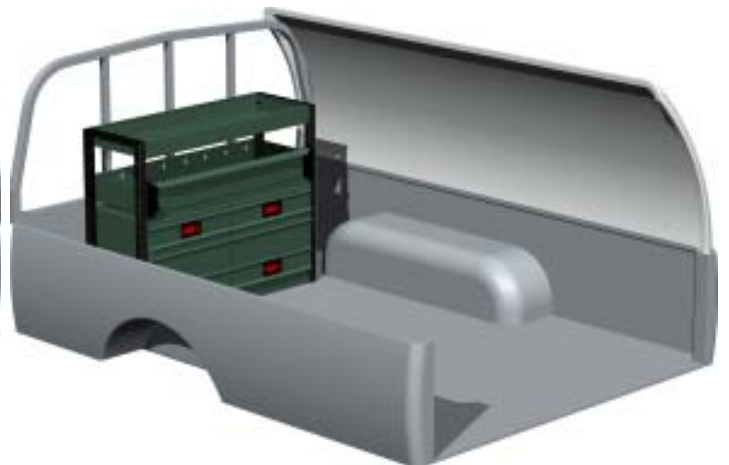
Package No. F60005
W x D x H 844 x 300 x 670 mm
Weight app. 15 kg



Package No. F60006
W x D x H 844 x 300 x 670 mm
Weight app. 17 kg



Package No. F60007
W x D x H 844 x 300 x 670 mm
Weight app. 19 kg



Package No. F60008
W x D x H 844 x 300 x 670 mm
Weight app. 29 kg

SYSTEM EDSTRÖM
is qualitytested by:



The packages includes what you see in the drawing and necessary installation parts.

What you can add:

Drawer inserts, file holders, tool holders and more.

See us on internet : <http://www.edstrom.se>

Dealer



A place for everything.